

Wireless Application – Indoor LAN

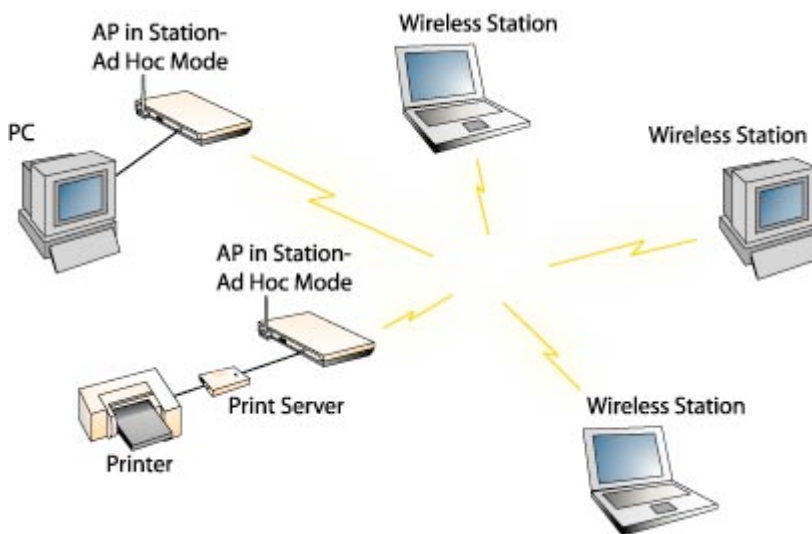
RF4Net.com Wireless LAN

High Speed Wireless RF4Net.com Connectivity

Wireless LAN products ensures reliable connections between buildings, without the limitation of wires and cables.

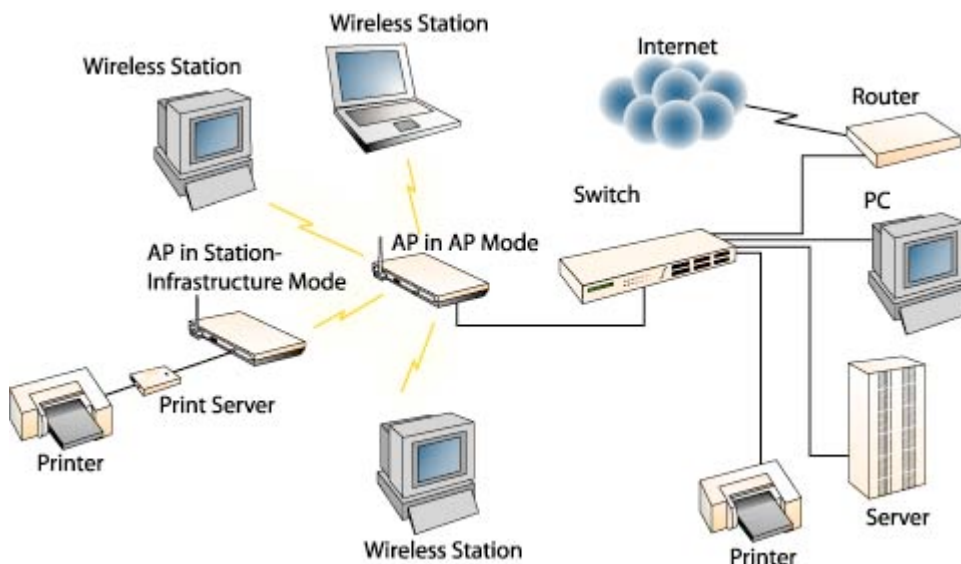
RF4Net.com Adapters are equipt with 3 different interfaces, including PCMCIA, PCI, and USB. Access Point models provide various enhanced features that include Access point, Inter-Building Bridge and Routing. We also provide high-gain antennas for extending the coverage of your Wireless LAN.

Pure Wireless Network



The simplest Wireless LAN configuration is an independent (or peer-to-peer) Wireless LAN that connects a set of PCs or Note Books with wireless adapters. Any time two or more wireless adapters are within range of each other, they can set up an independent network.

Wireless - Ethernet LAN



In this application, multiple Access Points link the Wireless LAN to the

Wireless Glossary

IEEE 802.11b

The IEEE standard that specifies a carrier sense media access control and physical layer specifications for 5.5 and 11 Mbps wireless LANs.

Access Point

A wireless LAN transceiver that acts as a center point and bridges between wireless and wired networks.

Bridge

A device used to connect LANs by forwarding packets across connections at the Media Access Control (MAC) layer.

Roaming

Moving seamlessly from one AP coverage area to another with no loss in connectivity.

Uni-Directional Antenna

An antenna that concentrates transmission power into a direction thereby increasing coverage distance at the expense of coverage angle.

Omni-Directional Antenna

An antenna that provides a 360 degree transmission pattern. These types of antennas are used when coverage in all directions is required.

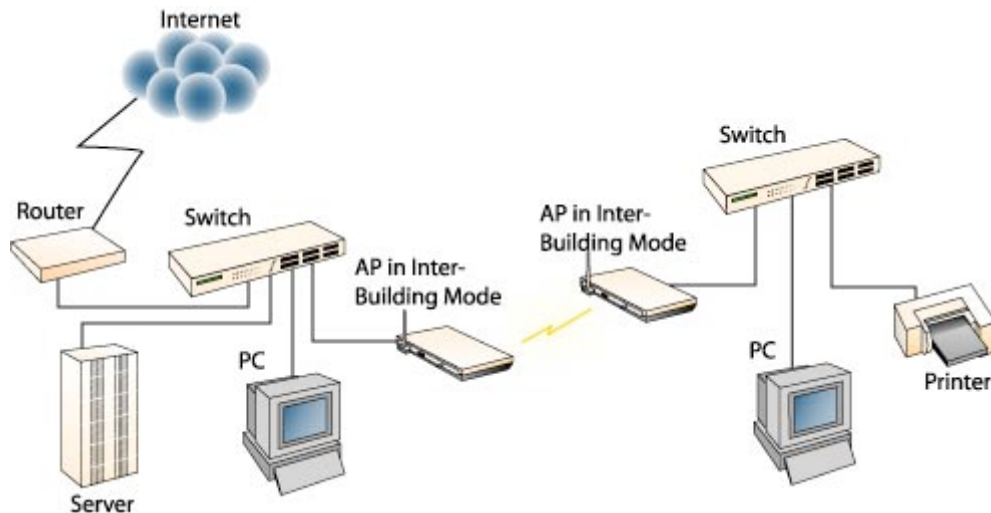
Wired Equivalent Privacy

WEP encryption

Wireless Application – Indoor LAN

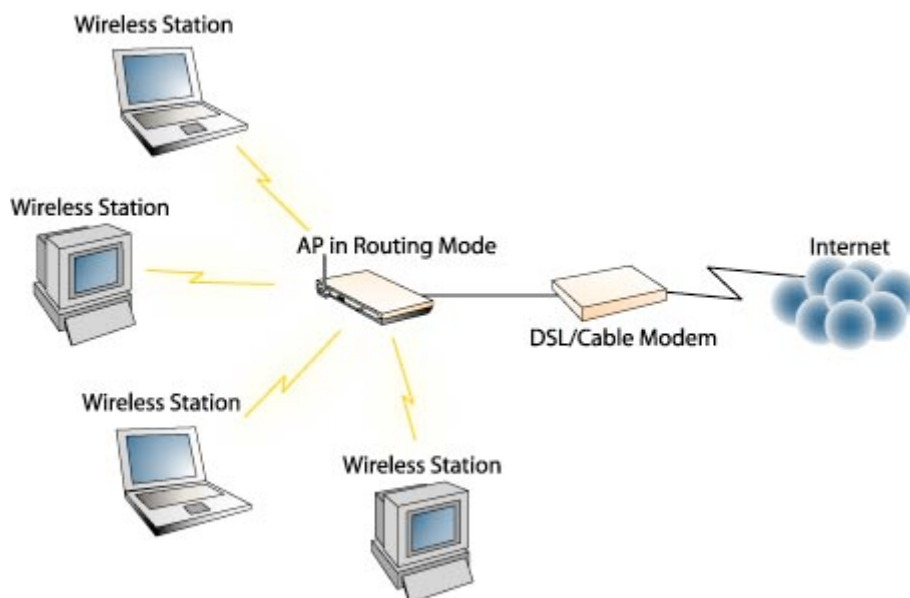
wired network and allows users to efficiently share network resources. The Access Point not only provides communication with the wired network but also mediate wireless network traffic.

Point-to-Multipoint Inter-Building (LAN-to-LAN)



Multiple LANs can link together through Access Points with Inter-building bridge function. Users in different buildings could share network resources. The distance between different locations can extend to a few miles through use of RF4Net.com high-gain Antennas.

Internet Access with Wireless DSL/Cable Router



An easy method for users to access Internet wirelessly. The Access Point with Routing function can connect to DSL/Cable modem so that they can provide Wireless Stations with Internet entries.

is defined by the 802.11 standard to prevent (1) access to the network by "intruders" using similar wireless LAN equipment and (2) capture of wireless LAN traffic through eavesdropping.