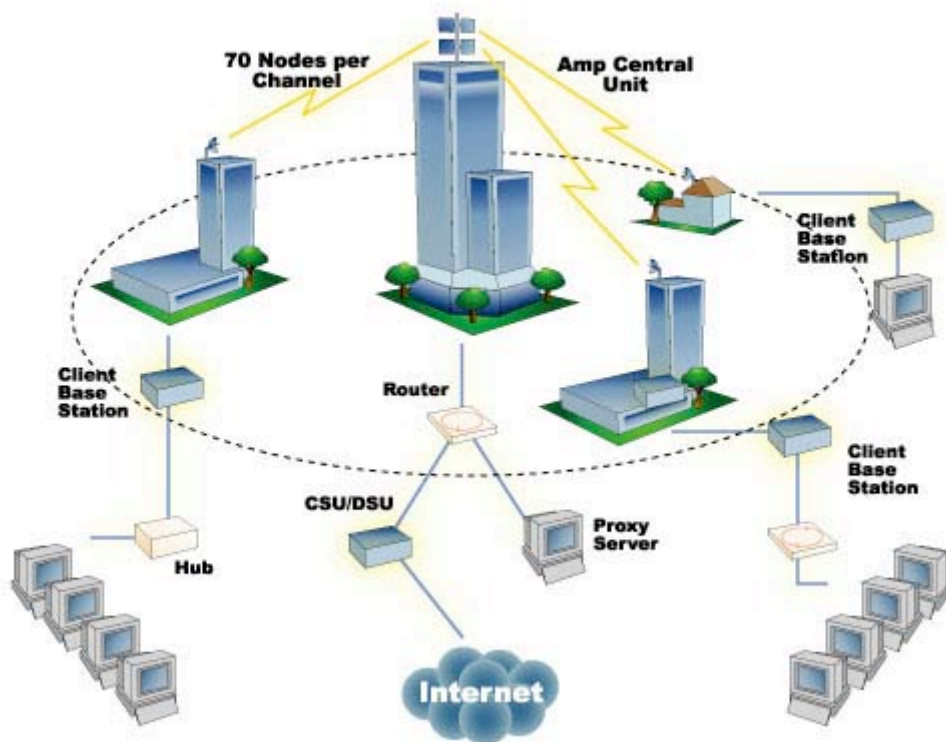


Wireless Outdoor LAN

RF4Net.com products are an ideal solution for wireless ISP's. These point to multipoint solutions operate at 11 Mbps. From a central site as many as 70 remote units can be connected to single central base station. Up to 10 base stations can be co-located at one central site providing 110 Mbps of aggregate bandwidth.

Point to Multi-Point (Using OMNI Antenna Control Site)



Typically an OMNI Antenna is used at a central site. At the CPE side several directional antenna options are available such as a 15dBi parabolic grid antenna. RF4Net.com provides the lowest cost CPE units in the market place. Several sectional antenna options as well as Non-line-of-sight options are available. Clear line of sight options can provide links up to 5, 10, or 20 miles depending on the antenna combination deployed.

Wireless Glossary

IEEE 802.11b
The IEEE standard that specifies a carrier sense media access control and physical layer specifications for 5.5 and 11 Mbps wireless LANs.

Access Point
A wireless LAN transceiver that acts as a center point and bridges between wireless and wired networks.

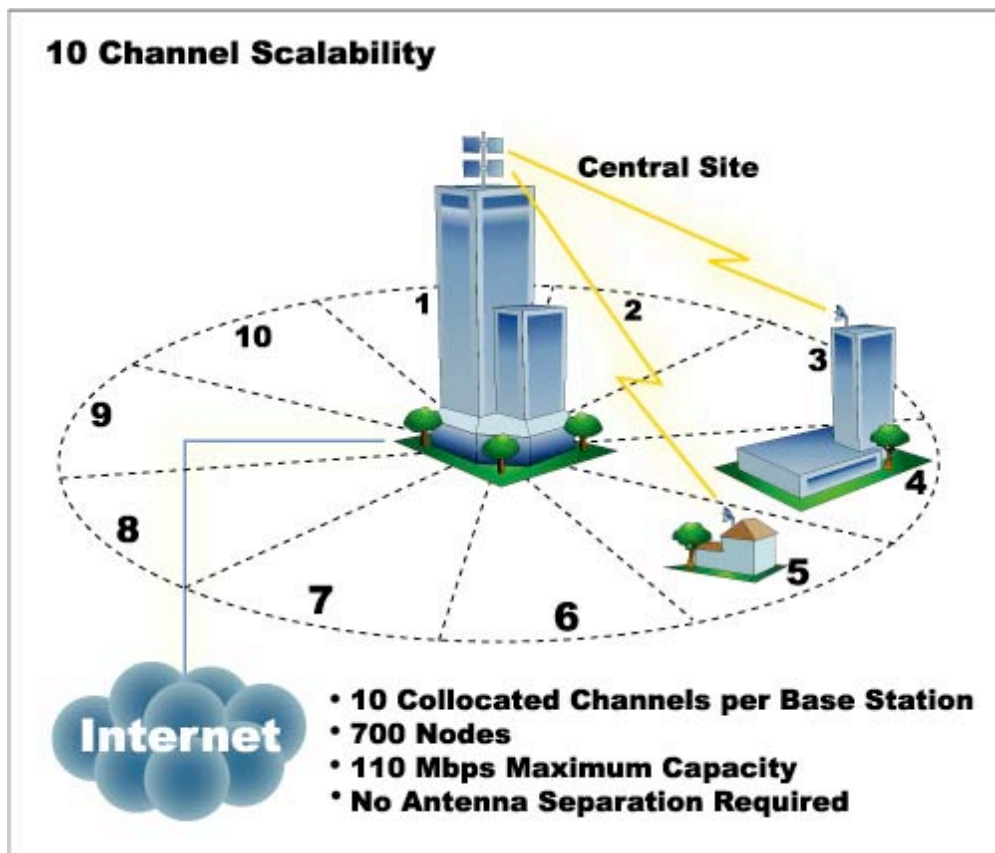
Bridge
A device used to connect LANs by forwarding packets across connections at the Media Access Control (MAC) layer.

Roaming
Moving seamlessly from one AP coverage area to another with no loss in connectivity.

Uni-Directional Antenna
An antenna that concentrates transmission power into a direction thereby increasing coverage distance at the expense of coverage angle.

Omni-Directional Antenna
An antenna that provides a 360 degree transmission pattern. These types of antennas are used when coverage in all directions is required.

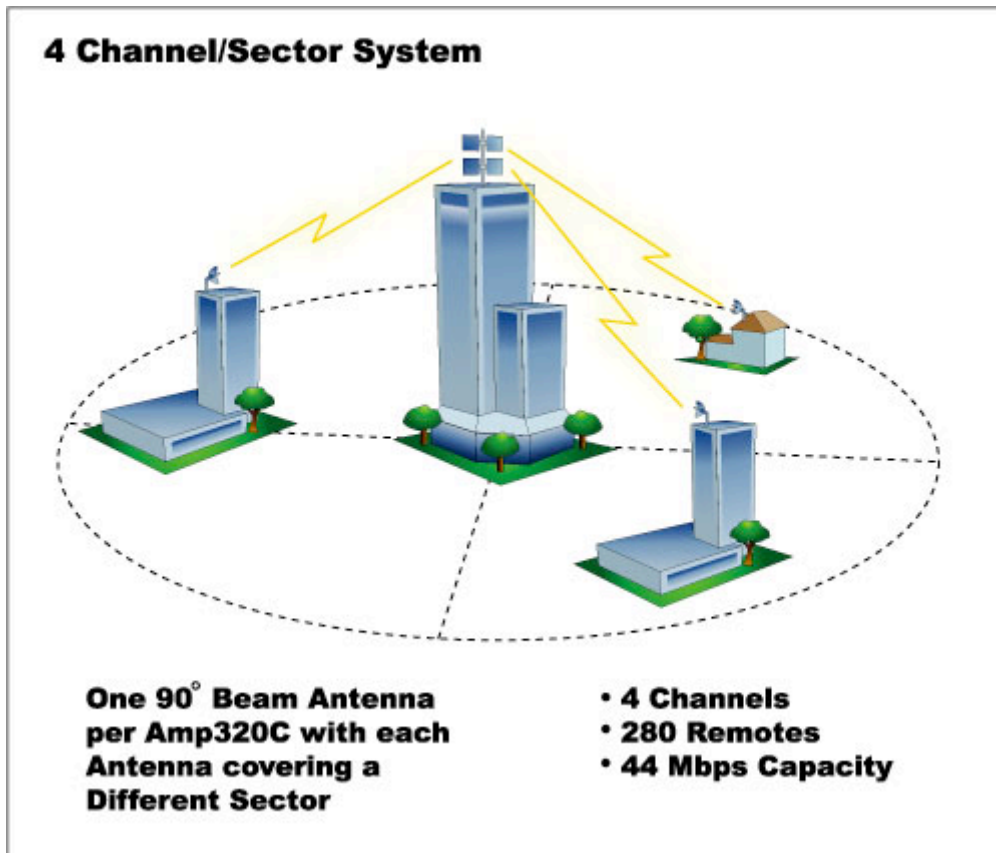
Wireless Outdoor LAN



Wired Equivalent Privacy

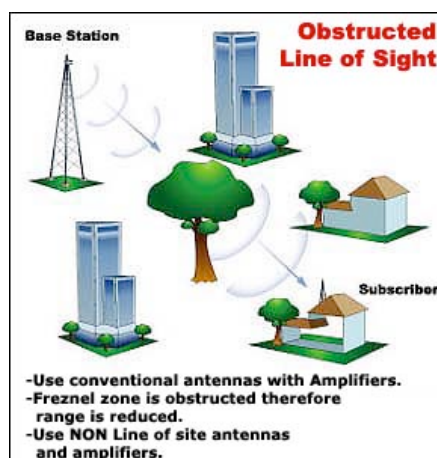
WEP encryption is defined by the 802.11 standard to prevent (1) access to the network by "intruders" using similar wireless LAN equipment and (2) capture of wireless LAN traffic through eavesdropping.

Wireless Outdoor LAN



RF4Net.com recently introduced it's Non-line-of-sight antennas which can be used for connection when buildings or trees are in the way of the two antennas, central site and CPE side.

Line of Sight vs. Non-Line of Sight Conditions



Wireless Outdoor LAN

